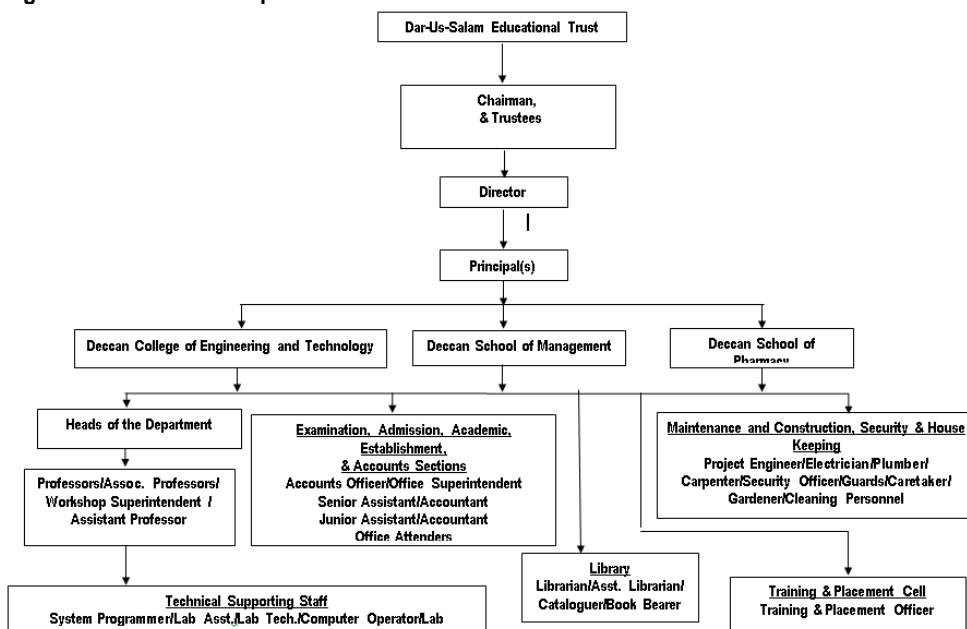


MANDATORY DISCLOSURE
Updated on: July 12th, 2021

AICTE File No	F.No. South-Central/1-9320515361/2021/EOA, Date: 02-Jul-2021			
Date/Period of last approval	Date: 02-Jul-2021 / 01 Year (2021-2022)			
1	Name of the institution	DECCAN GROUP OF INSTITUTIONS (A Self Financed Muslim Minority Technical Campus, Estd. by Dar-us-Salam Educational Trust) (Affiliated to Osmania University, Hyderabad & Approved by AICTE, New Delhi) Darussalam, Aghapura, Hyderabad – 500 001 Telangana, India Mobile: 9440570058 Email: dcet@deccancollege.ac.in URL: http://dgi.org.in/		
2	Name and address of the Trust	The Dar-Us-Salam Educational Trust Darussalam, Aghapura, Hyderabad – 500 001 Telangana, India Mobile: 9666661838 Email: dcet@deccancollege.ac.in URL: http://dgi.org.in/		
3	Name and Address of the Principal/ Director	Prof. M.A. MALIK, Ph.D Director DECCAN GROUP OF INSTITUTIONS (A Self Financed Muslim Minority Technical Campus, Estd. by Dar-us-Salam Educational Trust) (Affiliated to Osmania University, Hyderabad & Approved by AICTE, New Delhi) Darussalam, Aghapura, Hyderabad – 500 001 Telangana, India Mobile: 9440570058 Email: dcet@deccancollege.ac.in URL: http://dgi.org.in/		
4	Name of the affiliating University	OSMANIA UNIVERSITY , Hyderabad - 500007, Telangana		
5	Governance	Members of the Board and their brief background		
		Name	Designation	Background
		Barrister Asaduddin Owaisi	Chairman	Member of Parliament Hyderabad Lok Sabha
		Mr. Syed Ahmed Pasha Quadri	Secretary	Member of Legislative Assembly, Telangana
		Mr. Mohd. Abdul Muneem	Trustee	Prominent Industrialist
		Mr. Syed Akber Nizamuddin Hussaini	Trustee	Chancellor, Jamia Nizamia Islamic University, Hyderabad
		Mr. Akbaruddin Owaisi	Trustee	Member of Legislative Assembly, Telangana
		Members of Academic Advisory Body		
		Name	Designation	
		Barrister Asaduddin Owaisi	Chairman, Darussalam Educational Trust, Hyderabad	
		Mr. Syed Ahmed Pasha Quadri	Secretary, Darussalam Educational Trust, Hyderabad	
		Mr. Mohd. Abdul Muneem	Trustee, Darussalam Educational Trust, Hyderabad	
		Mr. Syed Akber Nizamuddin Hussaini	Trustee, Darussalam Educational Trust, Hyderabad	
Mr. Akbaruddin Owaisi	Trustee, Darussalam Educational Trust, Hyderabad			
Prof M.A. Malik	Member Director, Deccan Group of Institutions, Hyderabad			
Prof. S.A. Azeez Basha	Member Principal, Deccan School of Pharmacy, Hyderabad			
Prof. Raza Shah	Member Principal, Deccan School of Management, Hyderabad			
Prof. Manisha Saxena	Member Principal, Deccan School of Management, Hyderabad			

Frequency of the Board Meeting and Academic Advisory Body: Twice in a year

Organizational chart and processes



Nature and Extent of involvement of Faculty and students in academic affairs/ improvements

Available in the respective Departments/Programmes on the following websites

URL: <http://deccancollege.ac.in/>

URL: <http://www.deccan.ac.in/>

URL: <http://www.deccanpharmacy.com/>

Mechanism/ Norms and Procedure for democratic/ good Governance

Available in the respective Departments/Programmes on the following websites

URL: <http://deccancollege.ac.in/>

URL: <http://www.deccan.ac.in/>

URL: <http://www.deccanpharmacy.com/>

Student Feedback on Institutional Governance/ Faculty performance

Available in the respective Departments/Programmes on the following websites

URL: <http://deccancollege.ac.in/>

URL: <http://www.deccan.ac.in/>

URL: <http://www.deccanpharmacy.com/>

Grievance Redressal mechanism for Faculty, staff and students

URL: <http://www.dgi.org.in/Grievance%20Redressal%20Mechanism.html>

Establishment of Anti Ragging Committee

URL: <http://www.dgi.org.in/Anti-Ragging-Committee.html>

Establishment of Online Grievance Redressal Mechanism

URL: <https://www.aicte-india.org/feedback/index.php>

Establishment of Internal Complaint Committee (ICC)

Available in the respective Departments/Programmes on the following websites

URL: <http://deccancollege.ac.in/>

URL: <http://www.deccan.ac.in/>

URL: <http://www.deccanpharmacy.com/>

Establishment of Committee for SC/ ST URL: <http://www.dgi.org.in/Committee%20for%20SC%20ST.html>

Internal Quality Assurance Cell

Available in the respective Departments/Programmes on the following websites

URL: <http://deccancollege.ac.in/>

URL: <http://www.deccan.ac.in/>

URL: <http://www.deccanpharmacy.com/>

6	Programmes	Name of Programmes approved by AICTE																																																								
		<table border="1" style="width: 100%; border-collapse: collapse;"> <thead> <tr> <th style="width: 60%;">Programme/Course</th> <th style="width: 40%;">Approved Intake (2021-2022)</th> </tr> </thead> <tbody> <tr> <td colspan="2" style="text-align: center;">UG –Engineering</td> </tr> <tr> <td>B.E. Civil Engineering</td> <td style="text-align: center;">120</td> </tr> <tr> <td>B.E. Mechanical Engineering</td> <td style="text-align: center;">120</td> </tr> <tr> <td>B.E. ECE</td> <td style="text-align: center;">90</td> </tr> <tr> <td>B.E. CSE</td> <td style="text-align: center;">90</td> </tr> <tr> <td>B.E. IT</td> <td style="text-align: center;">60</td> </tr> <tr> <td>B.E. EEE</td> <td style="text-align: center;">60</td> </tr> <tr> <td>B.E. EIE</td> <td style="text-align: center;">40</td> </tr> <tr> <td>B.E. Prod</td> <td style="text-align: center;">40</td> </tr> <tr> <td colspan="2" style="text-align: center;">PG –Engineering</td> </tr> <tr> <td>M.E. Transportation Engineering</td> <td style="text-align: center;">18</td> </tr> <tr> <td>M.E. Structural Engineering</td> <td style="text-align: center;">18</td> </tr> <tr> <td>M.E. Digital Systems</td> <td style="text-align: center;">18</td> </tr> <tr> <td>M.Tech CSE</td> <td style="text-align: center;">18</td> </tr> <tr> <td>PG-MCA</td> <td style="text-align: center;">60</td> </tr> <tr> <td colspan="2" style="text-align: center;">UG –Pharmacy</td> </tr> <tr> <td>B.Pharm</td> <td style="text-align: center;">100</td> </tr> <tr> <td>Pharm-D</td> <td style="text-align: center;">30</td> </tr> <tr> <td>Pharm-D (PB)</td> <td style="text-align: center;">10</td> </tr> <tr> <td colspan="2" style="text-align: center;">PG –Pharmacy</td> </tr> <tr> <td>Pharmaceutics</td> <td style="text-align: center;">15</td> </tr> <tr> <td>Pharmaceutical Analysis</td> <td style="text-align: center;">15</td> </tr> <tr> <td>PG –MBA</td> <td style="text-align: center;">180</td> </tr> <tr> <td>PG –MHM</td> <td style="text-align: center;">60</td> </tr> </tbody> </table>							Programme/Course	Approved Intake (2021-2022)	UG –Engineering		B.E. Civil Engineering	120	B.E. Mechanical Engineering	120	B.E. ECE	90	B.E. CSE	90	B.E. IT	60	B.E. EEE	60	B.E. EIE	40	B.E. Prod	40	PG –Engineering		M.E. Transportation Engineering	18	M.E. Structural Engineering	18	M.E. Digital Systems	18	M.Tech CSE	18	PG-MCA	60	UG –Pharmacy		B.Pharm	100	Pharm-D	30	Pharm-D (PB)	10	PG –Pharmacy		Pharmaceutics	15	Pharmaceutical Analysis	15	PG –MBA	180	PG –MHM	60
		Programme/Course	Approved Intake (2021-2022)																																																							
		UG –Engineering																																																								
		B.E. Civil Engineering	120																																																							
		B.E. Mechanical Engineering	120																																																							
		B.E. ECE	90																																																							
		B.E. CSE	90																																																							
		B.E. IT	60																																																							
		B.E. EEE	60																																																							
		B.E. EIE	40																																																							
		B.E. Prod	40																																																							
		PG –Engineering																																																								
		M.E. Transportation Engineering	18																																																							
		M.E. Structural Engineering	18																																																							
		M.E. Digital Systems	18																																																							
		M.Tech CSE	18																																																							
		PG-MCA	60																																																							
		UG –Pharmacy																																																								
		B.Pharm	100																																																							
		Pharm-D	30																																																							
		Pharm-D (PB)	10																																																							
		PG –Pharmacy																																																								
		Pharmaceutics	15																																																							
		Pharmaceutical Analysis	15																																																							
		PG –MBA	180																																																							
PG –MHM	60																																																									
NBA Accreditation Status																																																										
1.	Programme / Course Accredited	Process initiated																																																								
NAAC Accreditation Status																																																										
1.	Accredited	Process initiated																																																								
For each Programme the following details are to be given:																																																										
Programme/Course	No. of Seats	Duration	Cut off rank (last -3Y)			Fee 2020-2021	Campus placement (last-3Y with max / min salary in Lakhs)																																																			
			2020-2021	2019-2020	2018-2019																																																					
UG –Engineering																																																										
B.E. Civil Engineering	120	4 years	83611	85116	76321	Rs.72,000	08 (3.3-3.3)																																																			
B.E. Mechanical Engineering	120	4 years	85449	89669	80414	Rs.72,000	30(4.2-3.0)																																																			
B.E. ECE	90	4 years	73112	72066	70798	Rs.72,000	38(3.7-3.0)																																																			
B.E. CSE	90	4 years	39535	44667	45050	Rs.72,000	86(7.0-3.0)																																																			
B.E. IT	60	4 years	47344	51124	53993	Rs.72,000	67(12.0-3.3)																																																			
B.E. EEE	60	4 years	85199	92257	80431	Rs.72,000	18(3.7-3.0)																																																			
B.E. EIE	40	4 years	200411	98760	99479	Rs.72,000	02(3.3-3.3)																																																			
B.E. Prod	40	4 years	0	0	200324	Rs.72,000	04(2.4-2.4)																																																			
PG –Engineering																																																										

		M.E. Transportation Engineering	18	2 years	2301	2284	1079	Rs.90,000	05(4.0-2.4)																													
		M.E. Structural Engineering	18	2 years	1502	1706	696	Rs.90,000	08(4.0-2.4)																													
		M.E. Digital Systems	18	2 years	1413	1454	2605	Rs.90,000	03(4.0-2.4)																													
		M.Tech CSE	18	2 years	907	637	744	Rs.90,000	10(7.0-3.0)																													
		PG-MCA	60	2 years	39103	43248	45783	Rs.41,000	04(4.0-3.0)																													
		UG –Pharmacy																																				
		B.Pharm	100	4 years	19580	26020	22875	Rs.70,000	22(2.2-1.5)																													
		Pharm-D	30	6 years	6424	8265	5466	Rs.75,000	11(2.7-2.2)																													
		Pharm-D (PB)	10	3 years	995	344	368	Rs.93,000	04(2.6-2.2)																													
		PG –Pharmacy																																				
		Pharmaceutics	15	2 years	1282	1316	1384	Rs.1,20,000	06(2.6-1.8)																													
		Pharmaceutical Analysis	15	2 years	2048	1716	1163	Rs.1,20,000	05(2.6-1.8)																													
		PG –MBA	180	2 years	21030	16426	16795	Rs.45,000	53(5.0 –3.0)																													
		PG –MHM	60	2 years	86	121	99	Rs.60,000	173(9.7-5.4)																													
7	Faculty	<table border="1"> <thead> <tr> <th>Programme/Course</th> <th>Web link</th> </tr> </thead> <tbody> <tr> <td colspan="2">UG/PG –Engineering</td> </tr> <tr> <td>Civil Engineering</td> <td>http://deccancollege.ac.in/civil_department_faculty.html</td> </tr> <tr> <td>Mechanical Engineering</td> <td>http://deccancollege.ac.in/mechanical_dep_faculty.html</td> </tr> <tr> <td>ECE</td> <td>http://deccancollege.ac.in/electronics_dep_faculty.html</td> </tr> <tr> <td>CSE</td> <td>http://deccancollege.ac.in/CSE_department_faculty.html</td> </tr> <tr> <td>IT</td> <td>http://deccancollege.ac.in/IT_dep_faculty.html</td> </tr> <tr> <td>EEE</td> <td>http://deccancollege.ac.in/electrical_department.html</td> </tr> <tr> <td>EIE</td> <td>http://deccancollege.ac.in/instrumentation_dep_faculty.html</td> </tr> <tr> <td>Prod</td> <td>http://deccancollege.ac.in/production_dep_faculty.html</td> </tr> <tr> <td>SH&M</td> <td>http://deccancollege.ac.in/BSH_dep_faculty.html</td> </tr> <tr> <td>PG-MCA</td> <td>http://deccancollege.ac.in/MCA_dep_faculty.html</td> </tr> <tr> <td>UG/PG –Pharmacy</td> <td>http://www.deccanpharmacy.com/department-of-pharmaceutical-chemistry/</td> </tr> <tr> <td>PG –MBA/MHM</td> <td>http://www.dshm.co.in/</td> </tr> </tbody> </table>									Programme/Course	Web link	UG/PG –Engineering		Civil Engineering	http://deccancollege.ac.in/civil_department_faculty.html	Mechanical Engineering	http://deccancollege.ac.in/mechanical_dep_faculty.html	ECE	http://deccancollege.ac.in/electronics_dep_faculty.html	CSE	http://deccancollege.ac.in/CSE_department_faculty.html	IT	http://deccancollege.ac.in/IT_dep_faculty.html	EEE	http://deccancollege.ac.in/electrical_department.html	EIE	http://deccancollege.ac.in/instrumentation_dep_faculty.html	Prod	http://deccancollege.ac.in/production_dep_faculty.html	SH&M	http://deccancollege.ac.in/BSH_dep_faculty.html	PG-MCA	http://deccancollege.ac.in/MCA_dep_faculty.html	UG/PG –Pharmacy	http://www.deccanpharmacy.com/department-of-pharmaceutical-chemistry/	PG –MBA/MHM	http://www.dshm.co.in/
Programme/Course	Web link																																					
UG/PG –Engineering																																						
Civil Engineering	http://deccancollege.ac.in/civil_department_faculty.html																																					
Mechanical Engineering	http://deccancollege.ac.in/mechanical_dep_faculty.html																																					
ECE	http://deccancollege.ac.in/electronics_dep_faculty.html																																					
CSE	http://deccancollege.ac.in/CSE_department_faculty.html																																					
IT	http://deccancollege.ac.in/IT_dep_faculty.html																																					
EEE	http://deccancollege.ac.in/electrical_department.html																																					
EIE	http://deccancollege.ac.in/instrumentation_dep_faculty.html																																					
Prod	http://deccancollege.ac.in/production_dep_faculty.html																																					
SH&M	http://deccancollege.ac.in/BSH_dep_faculty.html																																					
PG-MCA	http://deccancollege.ac.in/MCA_dep_faculty.html																																					
UG/PG –Pharmacy	http://www.deccanpharmacy.com/department-of-pharmaceutical-chemistry/																																					
PG –MBA/MHM	http://www.dshm.co.in/																																					
8	Profile of the Principal /Director	<p>Prof. M.A. MALIK, Ph.D Director DECCAN GROUP OF INSTITUTIONS (A Self Financed Muslim Minority Technical Campus, Estd. by Dar-us-Salam Educational Trust) (Affiliated to Osmania University, Hyderabad & Approved by AICTE, New Delhi) Darussalam, Aghapura, Hdyerabad – 500 001 Telangana, India Mobile: 9440570058 Email: dcet@deccancollege.ac.in URL: http://dgi.org.in/ Work Experience: 35 Years (Teaching/Research/Academic Administration)</p>																																				
	Profile of the Faculty	<table border="1"> <thead> <tr> <th>Programme/Course</th> <th>Web link</th> </tr> </thead> <tbody> <tr> <td colspan="2">UG/PG –Engineering</td> </tr> <tr> <td>Civil Engineering</td> <td>http://deccancollege.ac.in/civil_department_faculty.html</td> </tr> <tr> <td>Mechanical Engineering</td> <td>http://deccancollege.ac.in/mechanical_dep_faculty.html</td> </tr> <tr> <td>ECE</td> <td>http://deccancollege.ac.in/electronics_dep_faculty.html</td> </tr> <tr> <td>CSE</td> <td>http://deccancollege.ac.in/CSE_department_faculty.html</td> </tr> <tr> <td>IT</td> <td>http://deccancollege.ac.in/IT_dep_faculty.html</td> </tr> <tr> <td>EEE</td> <td>http://deccancollege.ac.in/electrical_department.html</td> </tr> <tr> <td>EIE</td> <td>http://deccancollege.ac.in/instrumentation_dep_faculty.html</td> </tr> <tr> <td>Prod</td> <td>http://deccancollege.ac.in/production_dep_faculty.html</td> </tr> </tbody> </table>									Programme/Course	Web link	UG/PG –Engineering		Civil Engineering	http://deccancollege.ac.in/civil_department_faculty.html	Mechanical Engineering	http://deccancollege.ac.in/mechanical_dep_faculty.html	ECE	http://deccancollege.ac.in/electronics_dep_faculty.html	CSE	http://deccancollege.ac.in/CSE_department_faculty.html	IT	http://deccancollege.ac.in/IT_dep_faculty.html	EEE	http://deccancollege.ac.in/electrical_department.html	EIE	http://deccancollege.ac.in/instrumentation_dep_faculty.html	Prod	http://deccancollege.ac.in/production_dep_faculty.html								
Programme/Course	Web link																																					
UG/PG –Engineering																																						
Civil Engineering	http://deccancollege.ac.in/civil_department_faculty.html																																					
Mechanical Engineering	http://deccancollege.ac.in/mechanical_dep_faculty.html																																					
ECE	http://deccancollege.ac.in/electronics_dep_faculty.html																																					
CSE	http://deccancollege.ac.in/CSE_department_faculty.html																																					
IT	http://deccancollege.ac.in/IT_dep_faculty.html																																					
EEE	http://deccancollege.ac.in/electrical_department.html																																					
EIE	http://deccancollege.ac.in/instrumentation_dep_faculty.html																																					
Prod	http://deccancollege.ac.in/production_dep_faculty.html																																					

	SH&M	http://deccancollege.ac.in/BSH_dep_faculty.html
	PG-MCA	http://deccancollege.ac.in/MCA_dep_faculty.html
	UG/PG –Pharmacy	http://www.deccanpharmacy.com/department-of-pharmaceutical-chemistry/
	PG –MBA/MHM	http://dshm.co.in/User/InnerPages/PageDetails?PageTitle=faculty&ptype=admissions

9	Fee Details	Programme	Fee fixed by TAFRC for the block period (2019-2022)
		UG–Engineering	Rs. 72,000 per annum
		PG –Engineering	Rs. 90,000 per annum
		PG –MCA	Rs.41,000 per annum
		UG –Pharmacy	B.Pharm : Rs.70,000 / Pharm D : Rs.75,000
		PG –Pharmacy	M.Pharm :Rs.1,20,000 / Pharm D(PB):Rs.93,000
		PG –MBA/MHM	MBA : Rs. 45,000 / MHM : Rs. 60,000

10	Admission	Programme/Course	Year wise Sanctioned Intake/Admitted								
			CAY (2020-2021)		CAY₁ (2019-2020)		CAY₂ (2018-2019)		CAY₃ (2017-2018)		
			S	A	S	A	S	A	S	A	
		UG–Engineering									
		Civil Engineering	120	107	120	108	120	120	120	120	120
		Mechanical Engineering	120	84	120	94	120	120	120	120	120
		ECE	90	70	90	79	90	88	90	90	90
		CSE	90	90	90	90	90	90	90	90	90
		IT	60	60	60	60	60	60	60	60	60
		EEE	60	36	60	44	60	56	60	60	56
		EIE	40	2	40	7	40	27	40	40	27
		Prod	40	0	40	0	40	22	40	40	31
		PG –Engineering									
		Structural Engineering	18	18	18	18	18	18	18	18	18
		Transportation Engineering	18	13	18	14	18	18	18	18	18
		CSE	18	14	18	16	18	15	18	18	18
		Digital Systems	18	5	18	4	18	10	18	18	18
		PG-MCA	60	40	60	24	60	29	60	60	41
		UG/PG –Pharmacy									
		B.Pharm	100	100	100	100	100	100	100	100	100
		Pharm-D	30	29	30	30	30	30	30	30	30
		Pharm-D (PB)	10	10	10	9	10	10	10	10	10
		PG –Pharmacy									
Pharmaceutics	15	13	15	10	15	14	15	15	13		
Pharmaceutical Analysis	15	10	15	12	15	11	15	15	12		
PG –MBA	180	180	180	159	180	180	180	180	180		
PG –MHM	60	57	60	60	60	60	60	60	60		
Total	1162	938	1162	938	1162	1078	1162	1162	1112		
Legend: S (Sanctioned Intake) A (Admitted)											

11	Admission Procedure	Programme	Seat Matrix (% on approved intake)		Test Agency	URL
			State CET	Mgmt.	CET-Convener	
		UG–Engineering	70%	30%	TSEAMCET	www.tseamcet.nic.in
		PG –Engineering	70%	30%	TSPGECET	www.pgecet.tsche.ac.in
		PG –MCA	70%	30%	TSICET	www.tsicet.nic.in
		UG –Pharmacy	70%	30%	TSEAMCET	www.tseamcet.nic.in
PG –Pharmacy	70%	30%	TSPGECET	www.pgecet.tsche.ac.in		

		PG –MBA/MHM	70%	30%	TSICET	www.icet.tsche.ac.in , www.osmania.ac.in		
		Calendar for admission against Convener seats and allotment as per the respective Convener(s) of the programme, Govt. of Telangana Calendar for admission against Management/vacant seats as provided by TSCHE, Govt. of Telangana						
12	Criteria and Weightage for Admission	CET-Convener/TSCHE, Govt. of Telangana						
13	List of Applicants	As per the admission guidelines and admission schedule provided by TSCHE, Govt. of Telangana						
14	Results of Admission Under Management seats/Vacant seats	As per the admission guidelines and admission schedule provided by TSCHE, Govt. of Telangana						
15	Information of Infrastructure and Other Resources Available	Infrastructure						
		Programme	No. of Rooms					
			Class	Tutorial	Lab	Drawing	Computer Center	Central Exam
		UG–Engineering	44	11	40	9	8	1
		PG –Engineering	8	5	6	-	4	1
		PG –MCA	3	1	3	-	1	1
		UG –Pharmacy	7	4	1	-	2	1
		PG –Pharmacy	6	5	4	-	2	1
PG –MBA/MHM	9	5	1	-	1	1		
	Min-Unit Area (m²)	80 m ²	60 m ²	150 m ²	150 m ²	330 m ²	360 m ²	
	Barrier Free Built Environment for disabled and elderly persons: Available Occupancy Certificate: Available Fire and Safety Certificate: Available Hostel Facilities: Available							
	Library							
		Programme/Course	Titles	Journals	Online National/ International Journals subscribed			
		UG/PG –Engineering						
		Civil Engineering	2231	04	26/25			
		Mechanical Engineering	1696	05	50/50			
		ECE	1534	02	454/229			
		CSE	1541	02	100/75			
		IT	842	02	100/75			
		EEE	853	02	300/200			
		EIE	642	01	50/50			
		Prod	592	02	50/50			
		SHM	2479	02	50/50			
		PG-MCA	750	02	100/35			
		UG/PG –Pharmacy	1363	31	15 / 16			
		PG –MBA/MHM	5263	33	27 / 6			

Laboratory and Workshop

Programme/Course	Major Equipments
UG/PG –Engineering	
Civil	CTM,UTM,TL,STN,MAR,STAB,SHEAR,STADD,AUTOCAD
Mech	ICENG, PUMPTUR,HTCOM,LATHE,FITTINGS,TIN SMITHY
ECE	CRO, FUNC GEN, UP UC KITS, UWBENCHES
CSE	IBMXSERIES 226 SERVERS, HP SCANNER, LASER PRINTER, CPLD, VS, RIDE, UMPS, XLINX, MSDN, OS WIN32, ALNG
IT	I3, I5, MC&INT KITS, KRYKARDS, UPS, SCOPENSERVER, REDHAT LINUX, RATROSE, ORACLE
EEE	RECTIFIER UNIT, OSCILLISCOPIES, DECADE RESISTANCE BONES, RELAY TEST KIT TOOL BOX, SIMULINK CONTROL SY
EIE	FCT, MCP, PCTRAIN, CVC, PCT, PLC
Prod	MIA, MOUL, ARCWEL, CNCLAT, DIES, MOULD
SHM	ELCT, TLB, DEMIM PLANT, SPECTROPHOTOMETERS, OCSILLOSC, P MTERS, DTTO, NRAM, UPS
PG-MCA	SER, COMP, PRINT, STAB, UPS, AIRCOND
UG/PG –Pharmacy	HPLC, UV, FTIR, Brook field viscometer
PG –MBA/MHM	Computers, Printers, Scanner, LCDs

List of Experimental Setup in each Laboratory/ Workshop:

As per Osmania University approved scheme and syllabus URL: <http://www.uceou.edu/DeanFE.html>

Computing Facilities

Programme	Internet Bandwidth	Number and configuration of System	Number of system connected by LAN/WAN	Major software packages
UG/PG–Engineering PG –MCA UG/PG–Pharmacy PG –MBA/MHM	100 Mbps Internet leased line + 40 Mbps Wi-Fi	1058	1058	Auto-CAD-2010 Auto-CAD LDDT Rel 2i Auto-CAD Map-2008 STADD – Pro 2001 3-D Studio Viz Rel 3i NASTRAN MATLab I CAP/4 Windows 8.71 (P SPICE) Active HDL 4.1 Mat Lab 5.1 Mat Lab 7.12 Xilinx HDL Cadence, Mentor Graphics MATLAB CONTROL SYSTEM TOOL BOX DIGITAL SIGNAL TOOL BOX Ansys 15 Solid Works PTC Creo 2.0 Iron CAD 2012 CATIA V 5 R11 Auto CAD 2000 Gibbs CAM CNC offline milling CNC Turning CNC Train Mill & Turn Work space Simulation Iron CAD 3.2 Ansys 5.7 Solid Works Education Version Microsoft VISIO, etc

Innovation Cell: **Available**

		<p>List of facilities available Games and Sports Facilities: Available Extra-Curricular Activities: Available Soft Skill Development Facilities: Available</p> <p>Teaching Learning Process Curricula and syllabus for each of the Programmes as approved by the University Academic Calendar of the University: Available on the below website URL: http://www.uceou.edu/DeanFE.html Academic Time Table with the name of the Faculty members handling the Course Teaching Load of each Faculty: Available in the respective Departments/Programmes Internal Continuous Evaluation System and place Student's assessment of Faculty, System in place: Available in the respective Departments/Programmes on the following websites URL: http://deccancollege.ac.in/ URL: https://deccan.ac.in/ URL: http://www.deccanpharmacy.com/</p>																																																																																																																																						
		<p>For each Post Graduate Courses give the following: Title of the Course Curricula and Syllabi Available on the below website URL: http://www.uceou.edu/DeanFE.html Laboratory facilities exclusive to the Post Graduate Course Available in the respective Departments/Programmes on the following websites URL: http://deccancollege.ac.in/ URL: http://www.deccan.ac.in/ URL: http://www.deccanpharmacy.com/</p>																																																																																																																																						
16	Enrollment of students in the last 3 years	<table border="1"> <thead> <tr> <th rowspan="2">Programme/Course</th> <th colspan="4">Enrollment in last three years</th> </tr> <tr> <th>CAY (2020-2021)</th> <th>CAY₁ (2019-2020)</th> <th>CAY₂ (2018-2019)</th> <th>CAY₃ (2017-2018)</th> </tr> </thead> <tbody> <tr> <td>UG-Engineering</td> <td></td> <td></td> <td></td> <td></td> </tr> <tr> <td>Civil Engineering</td> <td>107</td> <td>108</td> <td>120</td> <td>120</td> </tr> <tr> <td>Mechanical Engineering</td> <td>84</td> <td>94</td> <td>120</td> <td>120</td> </tr> <tr> <td>ECE</td> <td>70</td> <td>79</td> <td>88</td> <td>90</td> </tr> <tr> <td>CSE</td> <td>90</td> <td>90</td> <td>90</td> <td>90</td> </tr> <tr> <td>IT</td> <td>60</td> <td>60</td> <td>60</td> <td>60</td> </tr> <tr> <td>EEE</td> <td>36</td> <td>44</td> <td>56</td> <td>56</td> </tr> <tr> <td>EIE</td> <td>2</td> <td>7</td> <td>27</td> <td>27</td> </tr> <tr> <td>Prod</td> <td>0</td> <td>0</td> <td>22</td> <td>31</td> </tr> <tr> <td>PG -Engineering</td> <td></td> <td></td> <td></td> <td></td> </tr> <tr> <td>Structural Engineering</td> <td>18</td> <td>18</td> <td>18</td> <td>18</td> </tr> <tr> <td>Transportation Engineering</td> <td>13</td> <td>14</td> <td>18</td> <td>18</td> </tr> <tr> <td>CSE</td> <td>14</td> <td>16</td> <td>15</td> <td>18</td> </tr> <tr> <td>Digital Systems</td> <td>5</td> <td>4</td> <td>10</td> <td>18</td> </tr> <tr> <td>PG-MCA</td> <td>40</td> <td>24</td> <td>29</td> <td>41</td> </tr> <tr> <td>UG/PG -Pharmacy</td> <td></td> <td></td> <td></td> <td></td> </tr> <tr> <td>B.Pharm</td> <td>100</td> <td>100</td> <td>100</td> <td>100</td> </tr> <tr> <td>Pharm-D</td> <td>29</td> <td>30</td> <td>30</td> <td>30</td> </tr> <tr> <td>Pharm-D (PB)</td> <td>10</td> <td>9</td> <td>10</td> <td>10</td> </tr> <tr> <td>PG -Pharmacy</td> <td></td> <td></td> <td></td> <td></td> </tr> <tr> <td>Pharmaceutics</td> <td>13</td> <td>10</td> <td>14</td> <td>13</td> </tr> <tr> <td>Pharmaceutical Analysis</td> <td>10</td> <td>12</td> <td>11</td> <td>12</td> </tr> <tr> <td>PG -MBA</td> <td>180</td> <td>159</td> <td>180</td> <td>180</td> </tr> <tr> <td>PG -MHM</td> <td>57</td> <td>60</td> <td>60</td> <td>60</td> </tr> <tr> <td>Total</td> <td>938</td> <td>938</td> <td>1078</td> <td>1112</td> </tr> </tbody> </table>	Programme/Course	Enrollment in last three years				CAY (2020-2021)	CAY ₁ (2019-2020)	CAY ₂ (2018-2019)	CAY ₃ (2017-2018)	UG-Engineering					Civil Engineering	107	108	120	120	Mechanical Engineering	84	94	120	120	ECE	70	79	88	90	CSE	90	90	90	90	IT	60	60	60	60	EEE	36	44	56	56	EIE	2	7	27	27	Prod	0	0	22	31	PG -Engineering					Structural Engineering	18	18	18	18	Transportation Engineering	13	14	18	18	CSE	14	16	15	18	Digital Systems	5	4	10	18	PG-MCA	40	24	29	41	UG/PG -Pharmacy					B.Pharm	100	100	100	100	Pharm-D	29	30	30	30	Pharm-D (PB)	10	9	10	10	PG -Pharmacy					Pharmaceutics	13	10	14	13	Pharmaceutical Analysis	10	12	11	12	PG -MBA	180	159	180	180	PG -MHM	57	60	60	60	Total	938	938	1078	1112
Programme/Course	Enrollment in last three years																																																																																																																																							
	CAY (2020-2021)	CAY ₁ (2019-2020)	CAY ₂ (2018-2019)	CAY ₃ (2017-2018)																																																																																																																																				
UG-Engineering																																																																																																																																								
Civil Engineering	107	108	120	120																																																																																																																																				
Mechanical Engineering	84	94	120	120																																																																																																																																				
ECE	70	79	88	90																																																																																																																																				
CSE	90	90	90	90																																																																																																																																				
IT	60	60	60	60																																																																																																																																				
EEE	36	44	56	56																																																																																																																																				
EIE	2	7	27	27																																																																																																																																				
Prod	0	0	22	31																																																																																																																																				
PG -Engineering																																																																																																																																								
Structural Engineering	18	18	18	18																																																																																																																																				
Transportation Engineering	13	14	18	18																																																																																																																																				
CSE	14	16	15	18																																																																																																																																				
Digital Systems	5	4	10	18																																																																																																																																				
PG-MCA	40	24	29	41																																																																																																																																				
UG/PG -Pharmacy																																																																																																																																								
B.Pharm	100	100	100	100																																																																																																																																				
Pharm-D	29	30	30	30																																																																																																																																				
Pharm-D (PB)	10	9	10	10																																																																																																																																				
PG -Pharmacy																																																																																																																																								
Pharmaceutics	13	10	14	13																																																																																																																																				
Pharmaceutical Analysis	10	12	11	12																																																																																																																																				
PG -MBA	180	159	180	180																																																																																																																																				
PG -MHM	57	60	60	60																																																																																																																																				
Total	938	938	1078	1112																																																																																																																																				

17	List of Research Projects/ Consultancy Works	<table border="1"> <thead> <tr> <th rowspan="2">Programme/Course</th> <th colspan="4">Publications (if any) out of research in last three years out of masters projects</th> </tr> <tr> <th>CAY</th> <th>CAY₁</th> <th>CAY₂</th> <th>CAY₃</th> </tr> </thead> <tbody> <tr> <td colspan="5">PG –Engineering</td> </tr> <tr> <td>Structural Engineering</td> <td>02</td> <td>18</td> <td>16</td> <td>18</td> </tr> <tr> <td>Transportation Engineering</td> <td>08</td> <td>14</td> <td>18</td> <td>16</td> </tr> <tr> <td>CSE</td> <td>08</td> <td>18</td> <td>15</td> <td>16</td> </tr> <tr> <td>Digital Systems</td> <td>07</td> <td>06</td> <td>05</td> <td>06</td> </tr> <tr> <td>PG-MCA</td> <td>10</td> <td>13</td> <td>10</td> <td>11</td> </tr> <tr> <td colspan="5">PG –Pharmacy</td> </tr> <tr> <td>Pharmaceutics</td> <td>23</td> <td>10</td> <td>14</td> <td>13</td> </tr> <tr> <td>Pharmaceutical Analysis</td> <td>22</td> <td>12</td> <td>11</td> <td>12</td> </tr> <tr> <td>PG –MBA</td> <td>-</td> <td>12</td> <td>14</td> <td>18</td> </tr> <tr> <td>PG –MHM</td> <td>-</td> <td>16</td> <td>18</td> <td>16</td> </tr> </tbody> </table>	Programme/Course	Publications (if any) out of research in last three years out of masters projects				CAY	CAY ₁	CAY ₂	CAY ₃	PG –Engineering					Structural Engineering	02	18	16	18	Transportation Engineering	08	14	18	16	CSE	08	18	15	16	Digital Systems	07	06	05	06	PG-MCA	10	13	10	11	PG –Pharmacy					Pharmaceutics	23	10	14	13	Pharmaceutical Analysis	22	12	11	12	PG –MBA	-	12	14	18	PG –MHM	-	16	18	16
		Programme/Course		Publications (if any) out of research in last three years out of masters projects																																																														
			CAY	CAY ₁	CAY ₂	CAY ₃																																																												
		PG –Engineering																																																																
		Structural Engineering	02	18	16	18																																																												
		Transportation Engineering	08	14	18	16																																																												
		CSE	08	18	15	16																																																												
		Digital Systems	07	06	05	06																																																												
		PG-MCA	10	13	10	11																																																												
		PG –Pharmacy																																																																
		Pharmaceutics	23	10	14	13																																																												
		Pharmaceutical Analysis	22	12	11	12																																																												
		PG –MBA	-	12	14	18																																																												
		PG –MHM	-	16	18	16																																																												
		Number of Projects carried out, funding agency, Grant received: NIL																																																																
		Industry Linkage:																																																																
		MoUs with Industries (minimum 3)																																																																
18	LoA and subsequent EoA till the current Academic Year	http://www.dgi.org.in/																																																																
19	Accounted audited statement for the last three years	http://www.dgi.org.in/																																																																
20	Best Practices adopted, if any	<p>Enrichment of Teaching and Learning Process</p> <ul style="list-style-type: none"> • On-line Feedback from students and alumni for strengthening the teaching-learning system. • Improving Library with print and e-resources through J-Gate plus, DELNET. • Intensive use of technology and ICT enabled teaching-learning methods like Moodle, MOOCS, NPTEL, QEEE lectures, etc. • Wi-Fi enabled campus encourages additional learning by way of access to website containing e-learning resources. • Monitoring centre for research for undergoing M.E. scholars dissertation work • Transparency ensured in evaluating students' academic performance • 24x7 students' feedback about teachers' performance and follow-on action. • Introduced appraisal of teachers' performance by the students twice in an academic year <p>Enrichment of Skill Sets of Student</p> <ul style="list-style-type: none"> • Promoting the students for their involvement in co-curricular activities within and outside the campus by assigning additional credit under an able guidance of faculty • Industrial training and internship since second year of UG program • Conducting guest lectures, workshops and seminars to encourage higher education • Proctor system - each faculty member work as a proctor for a group of twenty students (five each from First year to final year B. E. program) for counseling and better performance of students. • Advanced learners are encouraged to come out with innovative ideas / take up short term projects and they are involved in mentoring activities. • Incubation center with the motive of encouraging the establishment of start-up companies in the immediate future • Career guidance cells, soft-skill development activities, grievance redressal cell helping students to excel in academics. 																																																																

Interaction with Outside World

- Establishment of tie-ups with renowned industries and institutes
- Motivation and support for students for appearing competitive exams and summer internship in industries, research Institute in India and abroad.
- Creation of Centers of Excellence to promote research in diversified fields to emerge in National and International level.
- Formation of Industry-Institute Partnership Cell to promote professional education and research.
- Academic flexibility and participation of industries in teaching.

Faculty Development and Welfare

- ERP implementation for management of Leave, Time table, Salary, Library, Exam and results, Fees Collection, Teaching learning processes, Admissions, etc.
- Appropriate functioning of Grievance Redressal mechanism
- Implementation of CAS to promote faculty to higher post
- Enhance teacher quality, all the faculty members to pursue Ph.D.
- Encourage faculty members apply for research and development projects funded by DST, UGC, CSIR, AICTE, DRDO, etc.
- FDP courses for the benefit of faculty members.
- Faculty members organizing / attending short term courses in emerging areas.
- Encourage all faculties in research, consultancy and extension in new and emerging areas thereby revenue generation.